

Masport[®] Heating

FREESTANDING WOOD FIRES

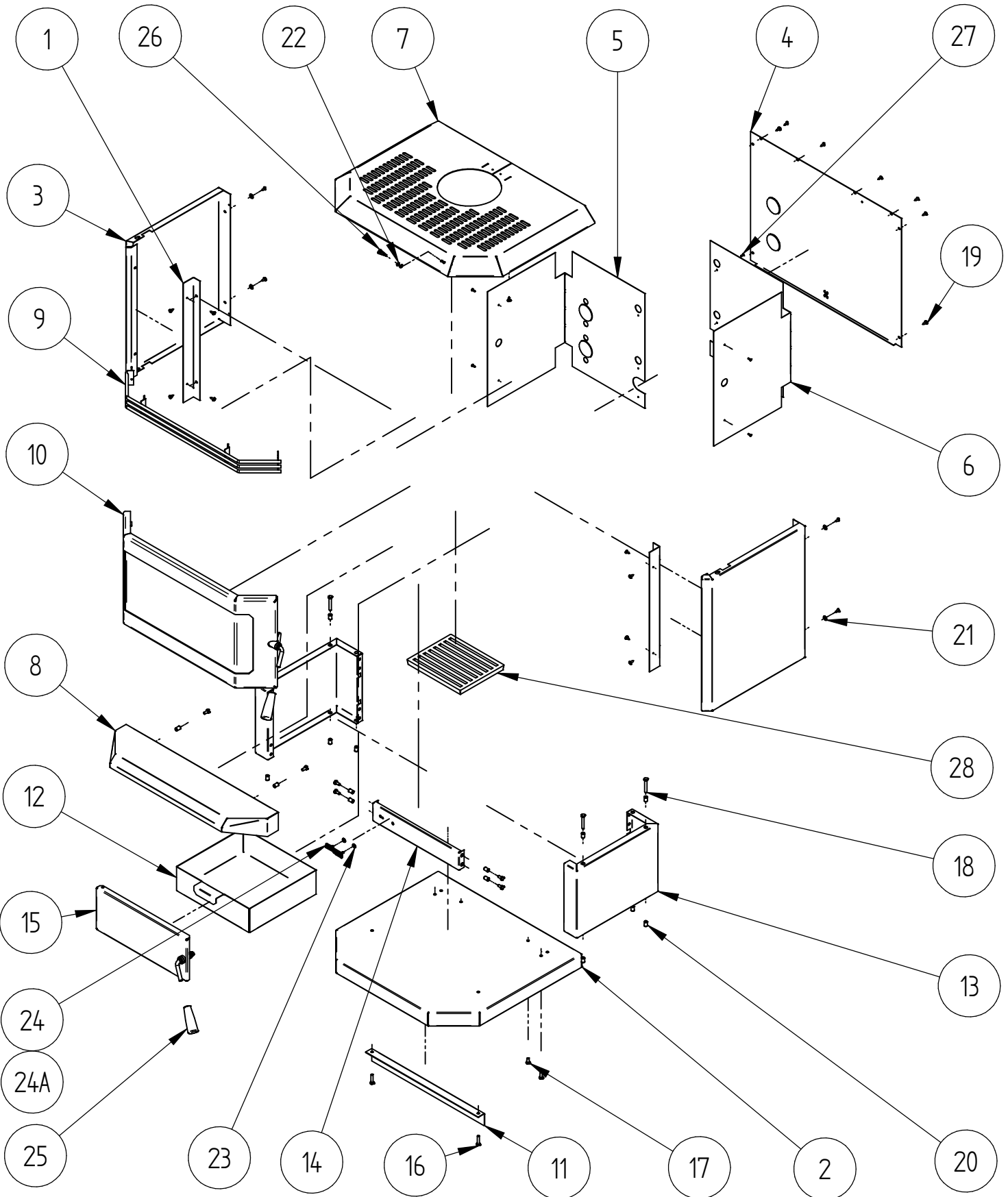
HESTIA MULTI FUEL - NEW ZEALAND

Item No.	MARKET	FUEL TYPE	FINISH	YEAR	FAN
HMFBK*	NZ	SOFTWOOD	Matte Black Enamel	Mar-2008	No
992911				Feb-2008	

*LOGAIRE BRAND

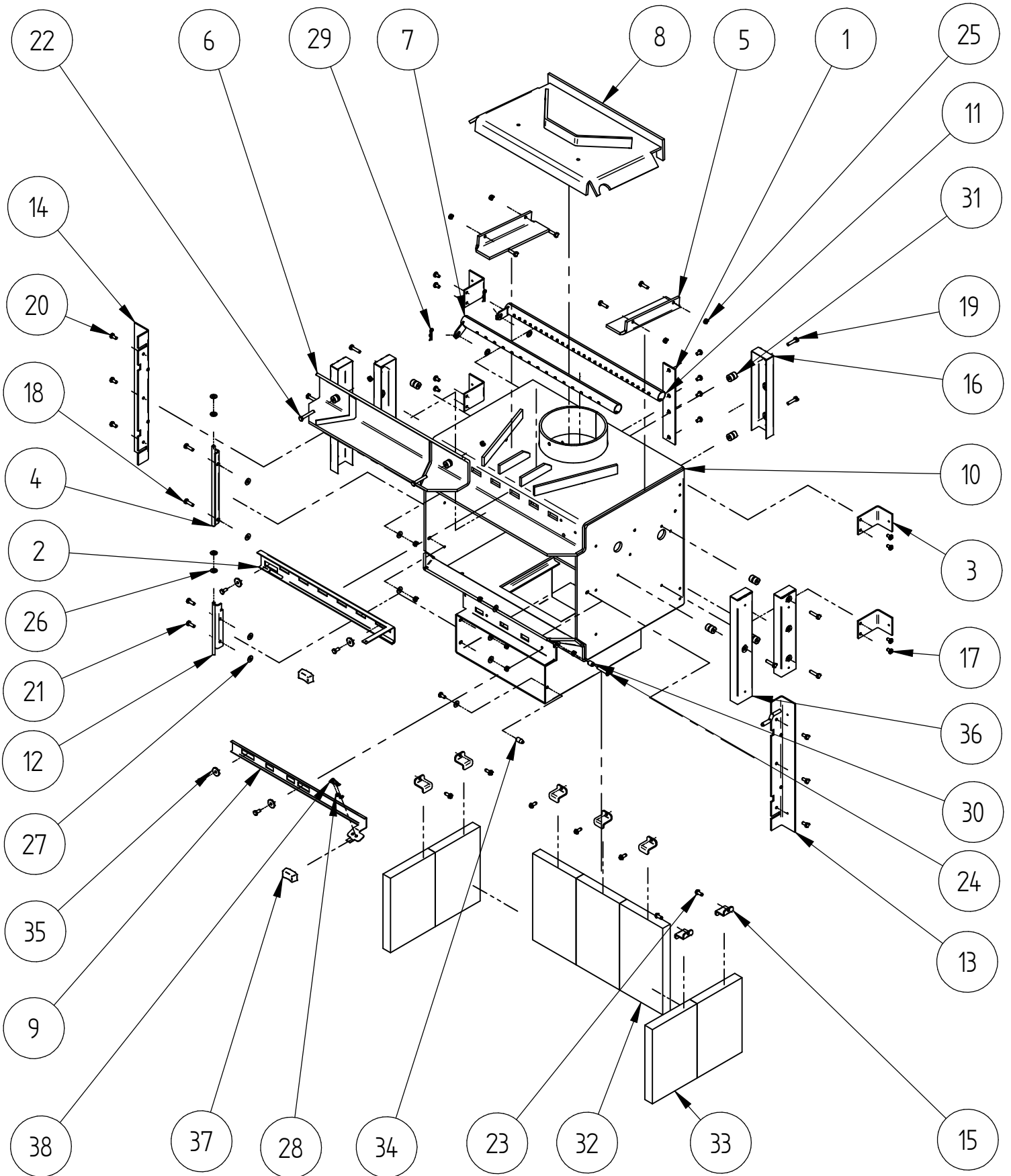


PANELS, DOOR AND PEDESTAL



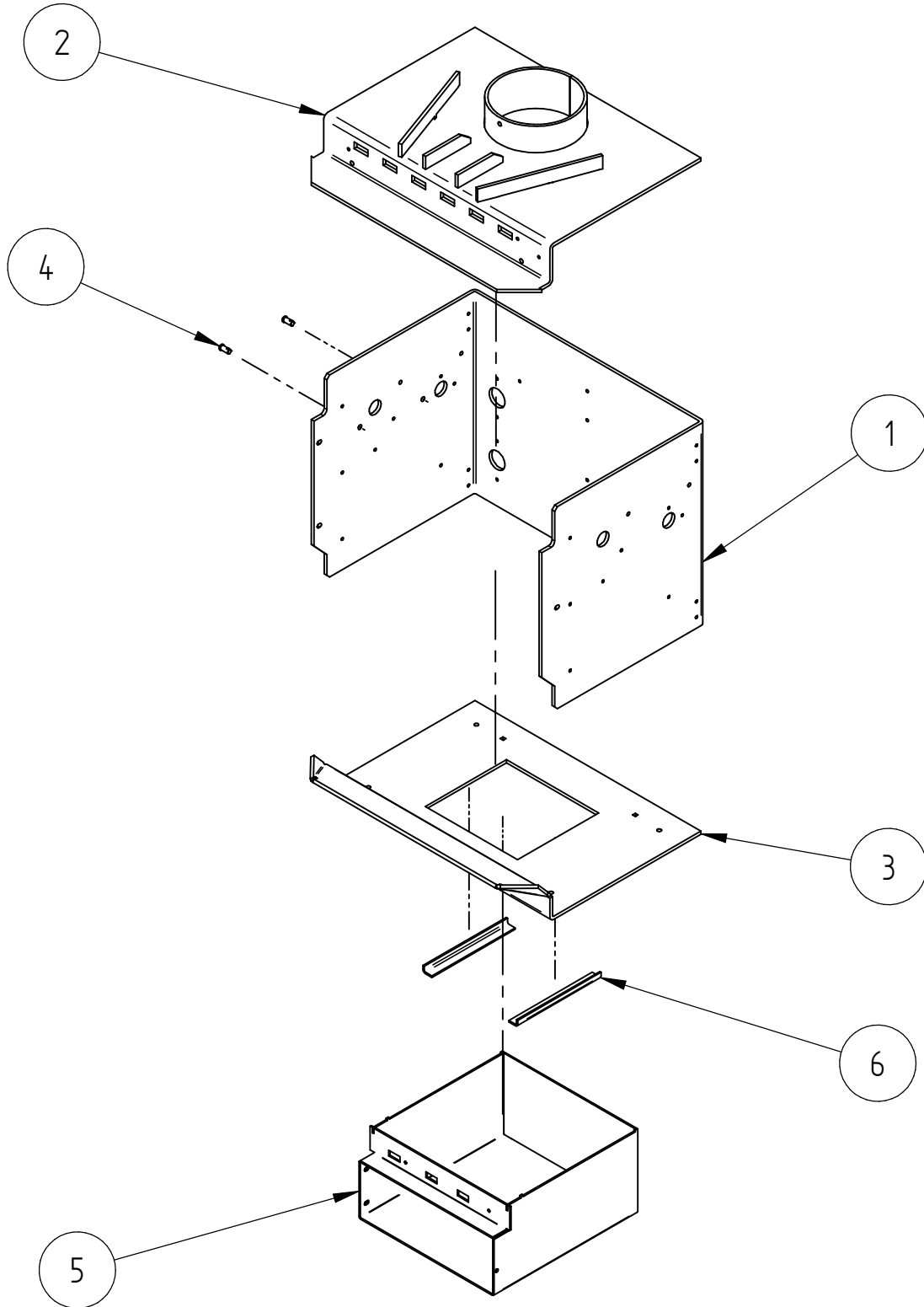
PANELS, DOOR AND PEDESTAL					
Item	Part ID	Model(s)		Description	Qty
		HMFBK	992911		
1	ATN00009	V02	V02	ATN SIDE PANEL ANGLE	2
2	ATN00025	E01	E01	ATN PEDESTAL BASE	1
3	HBA00006	E01	E01	HBA SIDE PANEL	2
4	HBA00012	-	-	HBA REAR HEAT SHILED	1
5	HBA00039	-	-	HBA INNER HEAT SHIELD	1
6	HBA00040	-	-	HBA R/H INNER HEAT SHIELD	1
7	HBAAC001	E01	E01	HBA TOP PANEL COMPLETE	1
8	HBAAC011	E01	E01	HBA ASH SHELF ASSEMBLY	1
9	HBAAC017	-	-	HBA LOUVRE ASSEMBLY	1
10	HBAAC730	E01	E01	HBA FINISHED DOOR ASSEMBLY	1
11	HMF00179	-	-	BOX BRACE	1
12	PMF00154	V02	V02	PMF ASH TRAY	1
13	PMF00178	E01	E01	PMF PEDESTAL SIDE	2
14	PMF00179	E01	E01	PMF PEDESTAL FRONT	1
15	PMFAC746	E01	E01	PMF FINAL ASH DOOR ASSEMBLY	1
16	521058	-	-	SCREW; M6X25 HEX ZP	4
17	521075	-	-	SCREW; M6X12 HEX ZP	8
18	521077	-	-	SCREW; M6X40 HEX ZP	4
19	521645	-	-	SCREW; S/T 8GX1/2" MUSH FLANGE POZI BLK	22
20	522611	-	-	NUT; RIVNUT THN/SHT M6X13.5	16
21	523004	-	-	WASHER; FLAT 1/4"X1/2"X1/16" FIBRE	4
22	526008	-	-	CLIP; STARLOCK M3	2
23	526009	-	-	CLIP; STARLOCK M4	2
24	587835	-N/A-	-	BADGE MASPORT HEATING	1
24A	MIC00740	-	-N/A-	BADGE LOGAIRE	1
25	MIC00376	-	-	MIC DOOR HANDLE	2
26	MIC00744	-	-	MIC HILO BADGE	1
27	524002	-	-	RIVET; 73 AS 4-3	7
28	PMF00743	-	-	MULTI FUEL GRATE	1

AIRSLIDE, BAFFLE, BRICKS AND FIREBOX



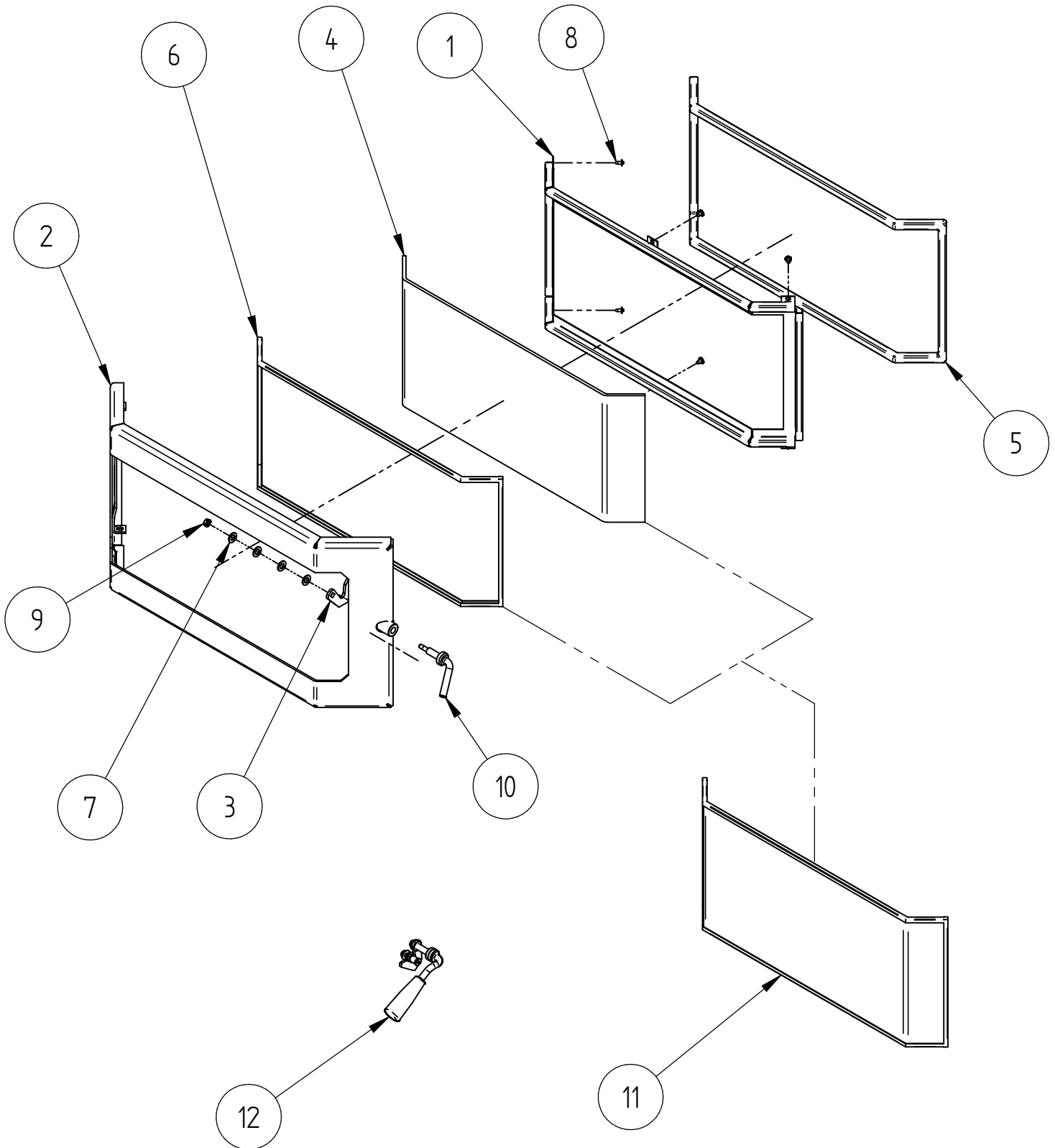
AIRSLIDE, BAFFLE, BRICKS AND FIREBOX					
Item	Part ID	Model(s)		Description	Qty
		HMFBK	992911		
1	AIB00135	-	-	AIB WATER BOOSTER COVER PLATE	1
2	ATN00036	-	-	ATN AIR SLIDE	1
3	ATN00130	-	-	ATN BODY MOUNT BRACKET	4
4	ATNAC190	-	-	ATN HINGE PLATE ASSEMBLY	1
5	HBA00116	-	-	HBA BAFFLE SUPPORT	2
6	HBAAC102	-	-	HBA AIR DEFLECTOR COMPLETE	1
7	HBA00138	-	-	HBA FRONT AIR BAR ASSEMBLY	1
8	HCAAC109	-	-	HCA BAFFLE ASSY	1
9	HMF00051	-	-	HMF ASH BOX AIR SLIDE	1
10	HMFAC004	-	-	HMF FIRE BOX ASSY	1
11	HMF00136	-	-	HMF REAR AIR BAR ASSEMBLY	1
12	PMFAC049	-	-	PMF ASH DOOR HINGE	1
13	ATNAC183	-	-	ATN STIFFENER & GUIDE SUB	1
14	ATN00183	-	-	ATN DOOR RIDDLE STIFFENER	1
15	HBA00118	-	-	HBA BRICK RETAINER	7
16	HCA00164	-	-	HCA SEC AIR CHANNEL	3
17	521046	-	-	SCREW; M6X10 PAN POZI ZP	12
18	521054	-	-	SCREW; M6X20 HEX ZP	6
19	521058	-	-	SCREW; M6X25 HEX ZP	8
20	521075	-	-	SCREW; M6X12 HEX ZP	11
21	521076	-	-	SCREW; M6X16 HEX ZP	2
22	521077	-	-	SCREW; M6X40 HEX ZP	2
23	521632	-	-	SCREW; S/T M6X15 HEX FLANGE NIC TAPTITE	7
24	521814	-	-	SCREW; CAP M6X35 CSK ALLEN BLK	1
25	522117	-	-	NUT; HEX STD M6 ZP	12
26	523018	-	-	WASHER; FLAT 5/16"X5/8" BLK	6
27	523036	-	-	WASHER; FLAT 1/4"X5/8" BLK	11
28	526008	-	-	CLIP; STARLOCK M3	2
29	526101	-	-	CLIP; R-CLIP 1.8 DIA ST	2
30	ATN00079	-	-	ATN DOOR CATCH PIN	1
31	HBA00129	-	-	HBA AIR DEFLECTOR SPACER	8
32	HMF00354	-	-	HMF BRICK - CERAMIC	3
33	HMF00355	-	-	HMF BRICK REAR - CERAMIC	4
34	MIC00079	-	-	LOGAIRE CATCH PIN	1
35	MIC00083	-	-	LOGAIRE METRO AIR SLIDE SPACER	4
36	MIC00123	-	-	MIC SEC AIR CHANNEL	2
37	MIC00375	-	-	MIC AIR SLIDE HANDLE	2
38	MIC00744	-	-	MIC HILO BADGE	1

FIREBOX DETAILS



FIREBOX DETAILS: HMFAC004					
Item	Part ID	Model(s)		Description	Qty
		HMF BK	992911		
1	HMF00106	-	-	HMF FIREBOX WRAP	1
2	HMFAC103	-	-	HMF FIREBOX TOP ASSEMBLY	1
3	HMF00107	-	-	HMF FIREBOX BASE	1
4	MIC00137	-	-	MIC AIRBAR PIN	2
5	HMFAC170	-	-	HMF ASH BOX ASSEMBLY	1
6	PMF00141	-	-	PMF GRATE SUPPORT	2

DOOR ASSEMBLY



DOOR ASSEMBLY						
Item	Part ID	Model(s)			Description	Qty
		HCABK	992909	992922		
		HBAAC730E01				
1	ATN00034	-	-	-	ATN GLASS RETAINER	1
2	HBAAC030	E01	E01	E01	HBA DOOR FRAME COMPLETE	1
3	ATN00133	-	-	-	ATN DOOR LATCH PLATE	1
4	ATN00204	-	-	-	ATN GLASS	1
5	C16MMDR	-	-	-	DOOR ROPE 16MM X 50m ROLL (MTR)	1
6	C25MMLT	-	-	-	LADDER TAPE 25x3x50m ROLL (MTR)	1
7	523018	-	-	-	WASHER; FLAT 5/16"X5/8" BLK	5
8	521627	-	-	-	SCREW; S/T 8GX3/8" MUSH FLANGE POZI BLK	6
9	522117	-	-	-	NUT; HEX STD M6 ZP	1
10	MIC00373	-	-	-	DOOR SPINDLE	1
11*	ATN99204	-	-	-	ATN 1999 GLASS/TAPE	1
12*	ATNACDH	-	-	-	ATN DOOR HANDLE ASSEMBLY KIT	1

*Optional Sale Kit

NOT ILLUSTRATED					
Item	Part ID	Model(s)		Descriptions	Qty
		HMF BK	992911		
1	593286	-N/A.-	-	OWNER MANUAL WOODFIRES	1
2	593287	-N/A.-	-	INSTALL MANUAL WOODFIRES	1
3	HMFBRICK	-N/A.-	-	INSTRUCTION - BRICK LAYOUT	1
4	HMF0738	-N/A.-	-	HMF INSTALLATION DATA SHEET	1
5	HMF00738	-	-N/A.-	HMF DATA SHEET	1
6	MIC00739	-	-N/A.-	LOGAIRE OPERATION MANUAL	1

SURFACE FINISH CODES FOR PANELS						
VITREOUS ENAMEL		VHT PAINT(Very High Temp)			POWDER COAT	
E01	MATT BLACK	V02	P-000022	METALLIC BLACK	P02	MATT BLACK
E02	GLOSS BLACK	V03	P-000043	CHARCOAL	P03	CHARCOAL
E03	CHARCOAL	V04	P-000081	TITANIUM	P05	SATIN BLACK
		V05	P-000051	CHARCOAL (DAM MET BLK)	P09	METTALIC BLACK
		V06	P-000052	METALLIC BLACK ZINC		
LESS FREQUENTLY OR OLD SURFACE FINISH CODES FOR PANELS						
VITREOUS ENAMEL		VHT PAINT(Very High Temp)			POWDER COAT	
E04	JASMINE	V01		SATIN BLACK HIGH TEMP	P01	BLUE/BLACK
					P04	GLOSS CHARCOAL
					P07	FLAT BLACK